

**PROFESSIONAL 2-WHEEL TRACTOR
ADDENDUM TO THE
ILLUSTRATED PARTS LIST
&
OPERATOR'S MANUAL**

Refer to the Professional 2-Wheel Tractor Illustrated Parts List, Form No. 47376(9-89).

On pages 19 and 20, item number 2, add part number 46798-Shifter Rod, quantity 1. On item number 15, add part number 46784-Shifter Stop Link, quantity 1.

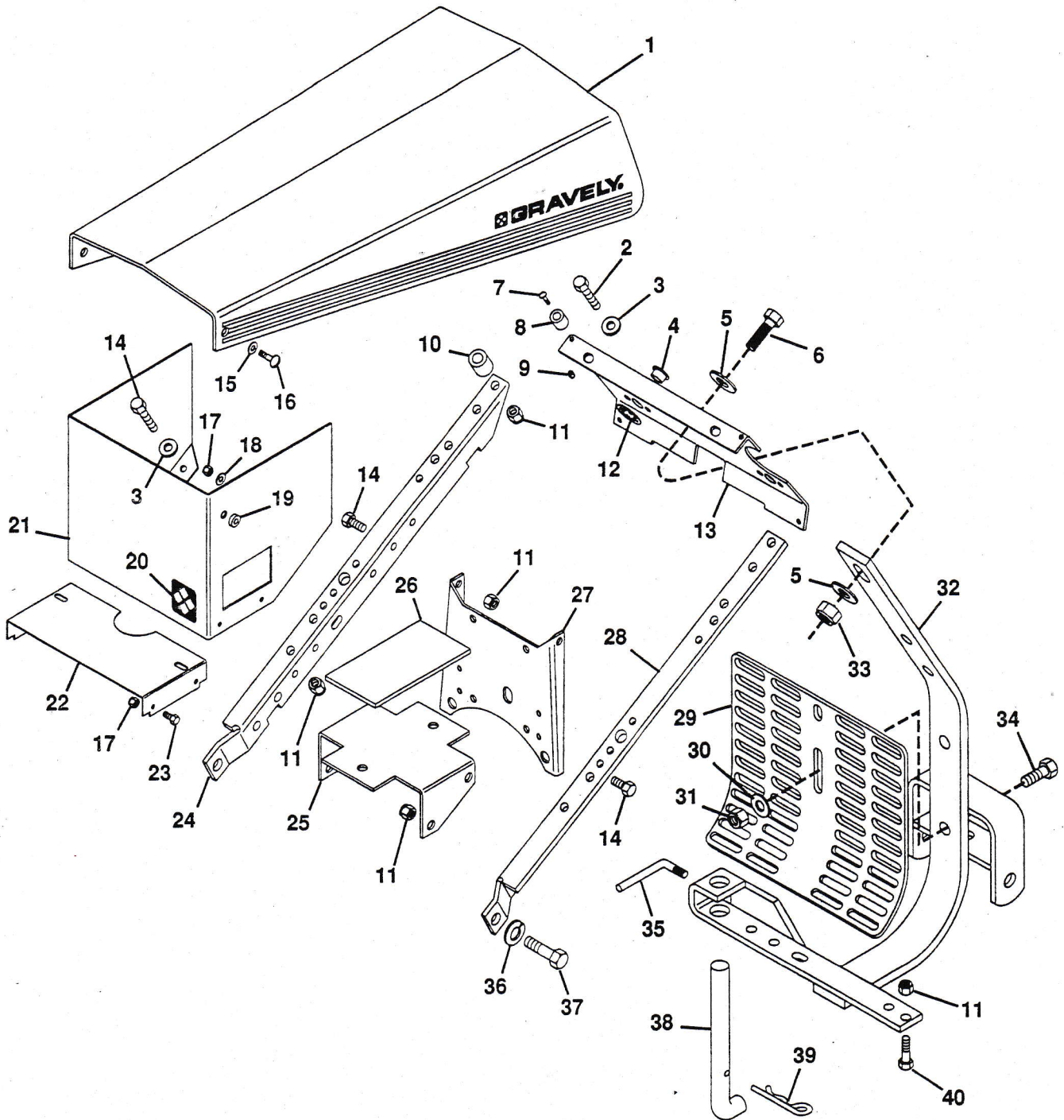
On pages 21 and 22, item number 2, add part number 46798-Shifter Rod, quantity 1. On item number 13, add part number 46784-Shifter Stop Link, quantity 1.

On pages 25 and 26, item number 3, add part number 49731-Brake Rod R.H., quantity 1. On item number 18, add part number 49732-Brake Rod L.H., quantity 1.

On pages 33 and 34, item number 41, add part number 41815-Cable, quantity 1. On item number 46, add part number 47402-Wiring Harness, quantity 1. On item number 52, add part number 11033-Battery to Magnetic Switch Cable, quantity 1. Also, add item number 59, part number 44321-Black Tie Wrap, quantity 4.

The Frame Illustration and the Fuel And Exhaust System Illustration for the 16 H.P. Briggs and Stratton engine units should be added as follows.

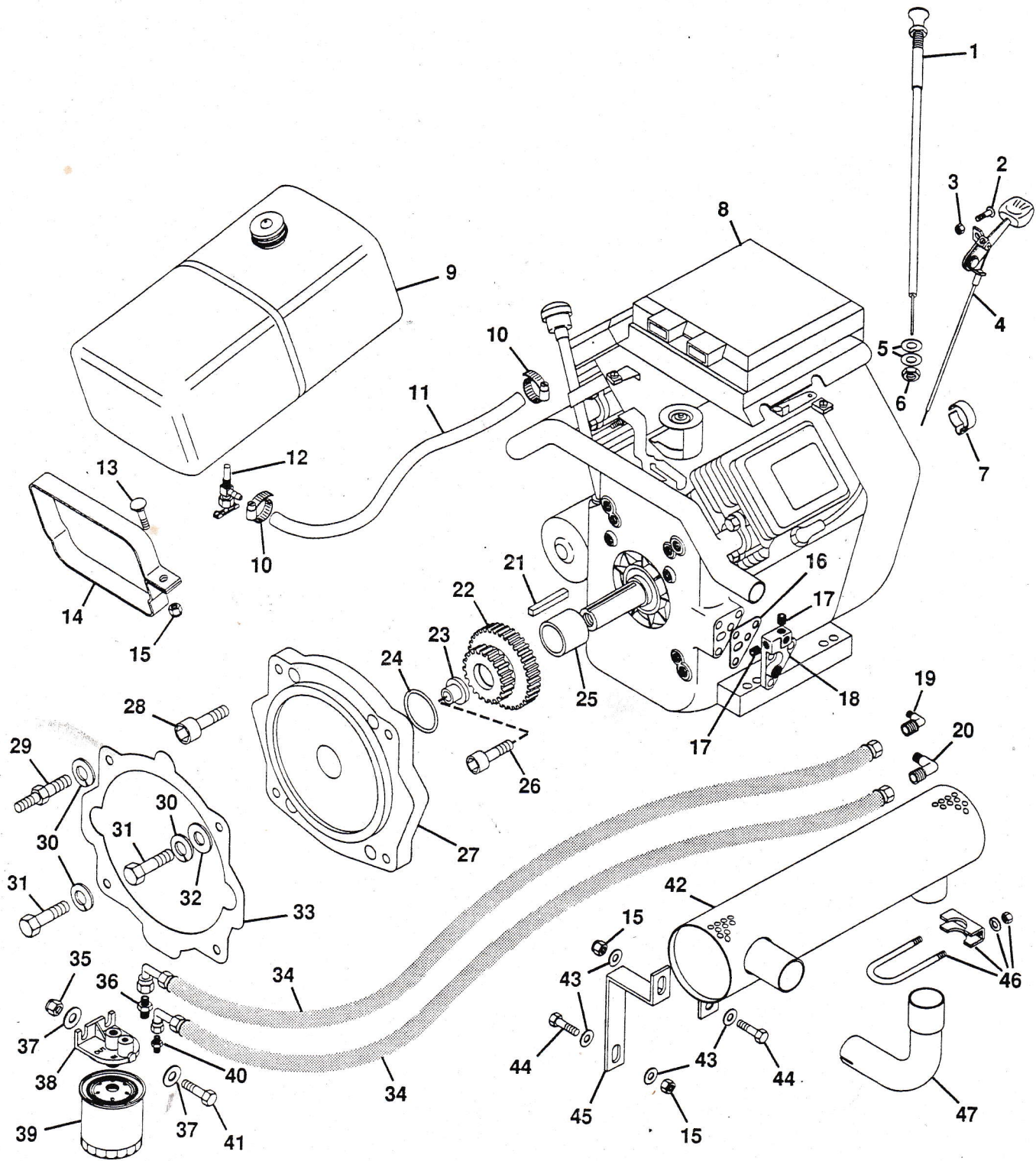
FRAME - PROFESSIONAL 16 B&S



FRAME - PROFESSIONAL 16 B&S

ITEM NO.	PART NO.	QTY.	DESCRIPTION	ITEM NO.	PART NO.	QTY.	DESCRIPTION
1	46755	1	Hood, Silk Screen	24	46796	1	Support, Handlebar R.H.
2	180126	2	Bolt, Hex 3/8-16x1.50	25	46824	1	Bracket, Tank Support
3	120394	4	Washer, Flat .406x.812x.065	26	41075	1	Pad, Gas Tank
4	34738	1	Bushing, .513x.750x.625	27	46388	1	Bracket
5	421879	2	Washer, Flat .656x1.250x.100	28	46797	1	Support, Handlebar L.H.
6	271723	1	Bolt, Hex 5/8-11x2.00	29	47190	1	Guard, Engine
7	159341	4	Screw, Mach. 6-32x.625 PHD	30	415543	1	Washer, Flat .531x1.250x.100
8	18183	4	Bumper	31	435507	2	Nut, Lock 1/2-13
9	427254	4	Nut, Mach. Lock 6-32	32	47527	1	Weldment, Hitch
10	43922	2	Bushing, Reverse Idler	33	418692	1	Nut, Lock 5/8-11
11	456004	12	Nut, Lock 3/8-16	34	180177	2	Bolt, Hex 1/2-13x1.50
12	34737	1	Ring, Retaining	35	13457	1	Handle, Adjusting
13	44657	1	Plate, Silk Screen	36	120384	2	Washer, Lock 1/2 Reg.
14	180121	8	Bolt, Hex 3/8-16x.875	37	180173	2	Bolt, Hex 1/2-13x1.00
15	120392	2	Washer, Flat .281x.625x.065	38	34062	1	Stand, Kick
16	160556	2	Screw, Mach. 1/4-20x1.00 PHD	39	10405	1	Pin, Hair
17	419454	6	Nut, Lock 1/4-20	40	180130	2	Bolt, Hex 3/8-16x2.00
18	446354	2	Washer, Flat .313x.875x.065	NS	44131	2	Decal, 16
19	41622	2	Bushing, Hood	NS	44074	2	Decal, Side Stripe
20	10697	1	Decal	NS	43003	2	Decal, Gravely Logo
21	46387	1	Support, Hood	NS	43418	2	Decal, 8 Lead
22	46390	1	Bracket	NS	44075	2	Decal, Professional
23	180018	4	Bolt, Hex 1/4-20x.625				

FUEL AND EXHAUST SYSTEM - PROFESSIONAL 16 B&S

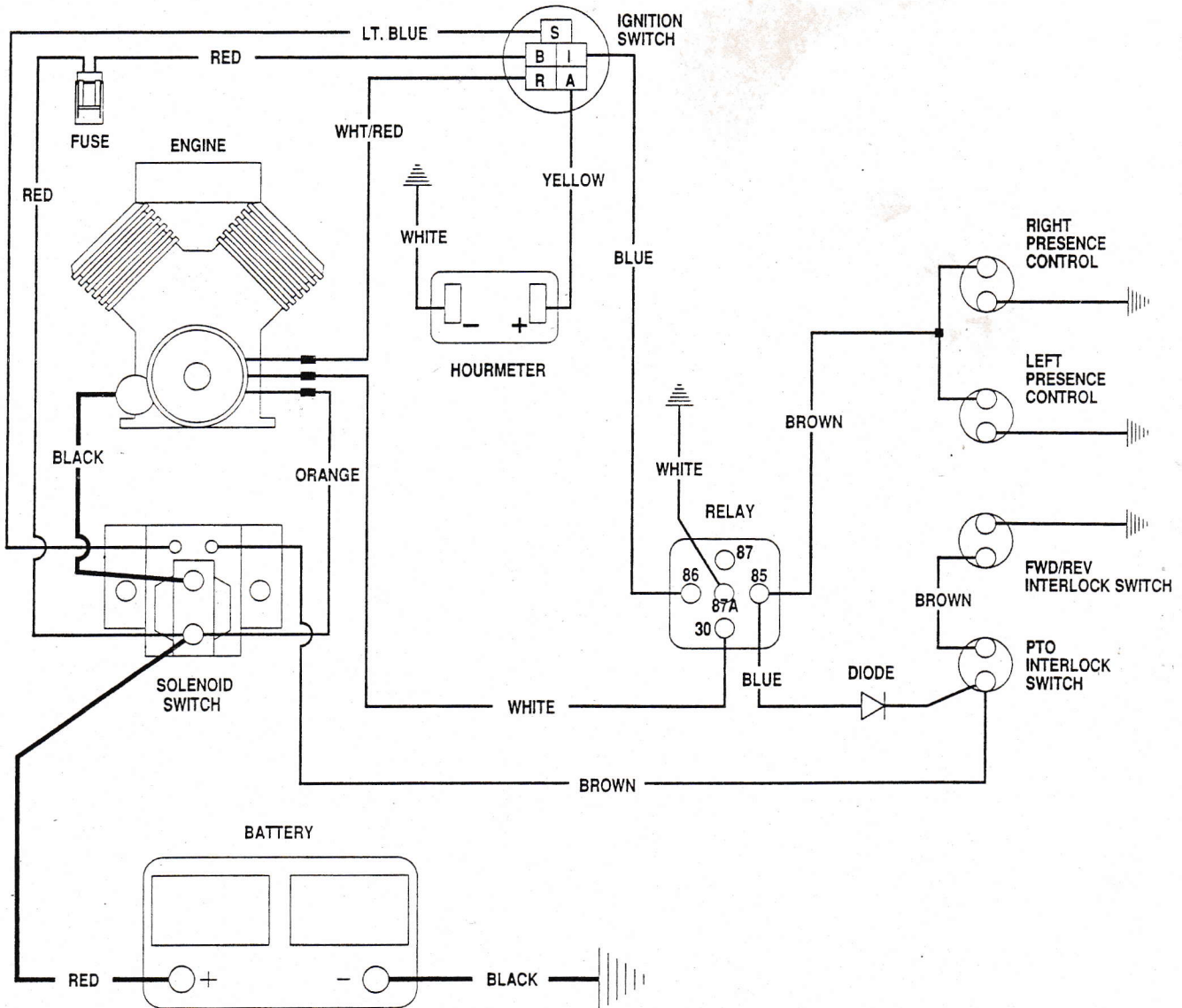


FUEL AND EXHAUST SYSTEM - PROFESSIONAL 16 B&S

ITEM NO.	PART NO.	QTY.	DESCRIPTION	ITEM NO.	PART NO.	QTY.	DESCRIPTION
1	46795	1	Lever, Choke Control	25	46436	1	Spacer, Gear
2	159920	2	Screw, Mach. 10-24x.50 PHD	26	453440	1	Screw, 3/8-24x1.00 SHD
3	190254	2	Nut, Lock 10-24	27	46989	1	Adaptor, B&S Engine
4	46794	1	Lever, Throttle	28	421648	4	Screw, Cap 7/16-14x1.00 SHD
5	120394	2	Washer, Flat .406x.812x.065	29	40404	1	Stud
6	124925	1	Nut, Hex Jam 3/8-24	30	131100	4	Washer, Lock 7/16 SP Heavy
7	8260	1	Clip, Conduit	31	180147	3	Bolt, Hex 7/16-14x1.25
8	47328	1	Engine, 16 H.P. B&S	32	120395	1	Washer, Flat .469x.938x.065
9	46425	1	Tank, Gas w/Cap	33	10635	1	Gasket, Chassis to Adaptor
10	32045	2	Clamp, Hose	34	49356	2	Assembly, Hose
11	21134	2 ft.	Line, Fuel	35	419455	2	Nut, Lock 5/16-18
12	7354	1	Valve and Strainer	36	50063	1	Fitting, Straight PH 6FTX-S
13	126342	2	Bolt, 1/4-20x1.75 Rd.Hd.Sq. Nk.	37	120393	4	Washer, Flat .344x.688x.065
14	10640	2	Strap, Fuel Tank	38	49654	1	Arm, Base
15	419454	4	Nut, Lock 1/4-20	39	49642	1	Filter, Oil
16	49641	1	Gasket, Oil Filter Adaptor	40	50064	1	Fitting, Straight PH 6-2FTX-S
17	444855	2	Plug, 1/8-27 Pipe HSKT	41	180081	2	Bolt, Hex 5/16-18x1.25
18	49653	1	Adaptor, Remote Oil Filter	42	44399	1	Muffler, 16 H.P.
19	49228	1	Adapter, 6-2-CTX-S	43	120386	4	Washer, Flat .312x.734x.065
20	49227	1	Adapter, 6CTX-S	44	180022	2	Bolt, Hex 1/4-20x1.00
21	47317	1	Key, Square	45	49327	1	Bracket, Exhaust
22	46410	1	Gear, 10/12 DP 21/30 Teeth	46	14728	2	Clamp, Muffler
23	46411	1	Pilot, Gear	47	49191	1	Elbow
24	47144	1	O-Ring				

Refer to the Professional 2-Wheel Tractor Operator's Manual, Form No. 47377(8-89).

In Section 7.2, add the Wiring Diagram for the 16 H.P Briggs and Stratton engine units as shown below.



16 H.P BRIGGS AND STRATTON